
Using the Ruddweigh 700/800 Trait Recording Function with Stockbook Software

Stockbook has a very flexible system of trait recording. The number of traits allowed is unlimited and they can be used to measure or make observations about almost anything the user requires. This makes the interaction with the trait recording system in the RW700/800 an important part of the capability of the RW700/800 and its use as a data collection tool, in addition to its weight recording role.

Traits that can be imported to Stockbook from the RW700/800

Following is a list of the traits that could be setup on the RW700/800 and imported into the Stockbook program. The list can be expanded in the "traits" area as Stockbook is setup by the users in this area and the list will be determined by their requirements:

- Alternate Id.
- Sex M (entire males), F (entire females), S (castrated males), X (speyed females), U (unknown)
- Mob & Group - must exist already
- Birth Year
- Number in birth
- Dentition
- Breed
- Paddock (number as shown in paddock list)
- Genetic Management Group
- Colour
- DNA sample number
- Horn Status
- Pregnancy test results (You need to indicate what character(s) indicates pregnant)
 - Pregnant or empty
 - Number of weeks pregnant
 - Number of foetuses
- Scanning results
 - EMA
 - RIB Fat
 - Rump Fat
 - Marble %
- Joinings (you need to indicate what character(s) indicates AI)
- Traits (active only, with at least one of score, index or measurement ticked) (anything you like)
eg.
 - Wet or Dry
 - Frame
 - Hip Height
 - Scrotal Circumference
 - Muscle Score
 - Eye Pigmentation
 - Teat Score
 - Temperament
 - etc. etc.
- Treatments (via a product number, as shown in the product list)

Stockbook Lists

Stockbook has numbers against many of the setup lists so that it can easily import data to various fields by referring to the field by its number rather than name. This makes it useful for importing data from the RW700/800 where the number of characters in an import file is limited to 19.

Id	Code	Name	Property
	12	Horse	Glen Forres
	18	House	Glen Forres
	34	Howlands	Glen Forres
	14	Jocks	Glen Forres
	20	Kinloss	Riverside
	10	Kirkland	
	1	Main Yards	
	16	Masters	
	24	Middle Gully	
	26	Mile End	
	15	Millers	
	25	Mole	
	28	Polo	
	36	Ram	
	4	Rogers	
	30	Russell	
	32	Scout Hall	

Include Inactive

Search For

Id	Code	Name	Property
	12	Horse	Glen Forres
	18	House	Glen Forres
	34	Howlands	Glen Forres
	14	Jocks	Glen Forres
	20	Kinloss	Riverside
	10	Kirkland	
	1	Main Yards	
	16	Masters	
	24	Middle Gully	
	26	Mile End	
	15	Millers	
	25	Mole	
	28	Polo	
	36	Ram	
	4	Rogers	
	30	Russell	
	32	Scout Hall	

Products _ □ ×

Client_Id	No.	Name
INDIV	12	5-in-1+ Sel
INDIV	8	7-in-1
INDIV	13	Batyocal
INDIV	4	Cattlemaster 7
INDIV	2	Dectomax Pour on
INDIV	1	Depoicillin
INDIV	11	Ivomec
INDIV	10	Lice-off
INDIV	7	Lucerne Hay
INDIV	6	Silage
INDIV	3	Ultravac 7in1
INDIV	9	Vatrazin
INDIV	5	Vibrio Vaccine

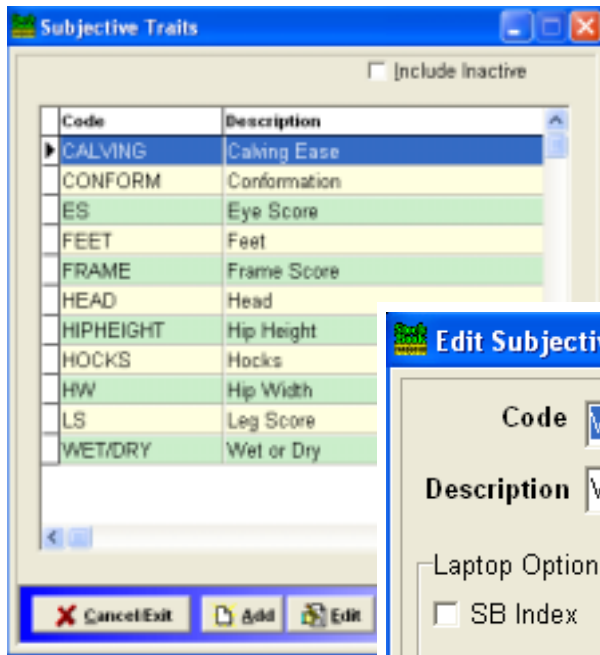
Include Inactive

× Cancel/Exit
📄 Add
✎ Edit
🗑 Delete
?

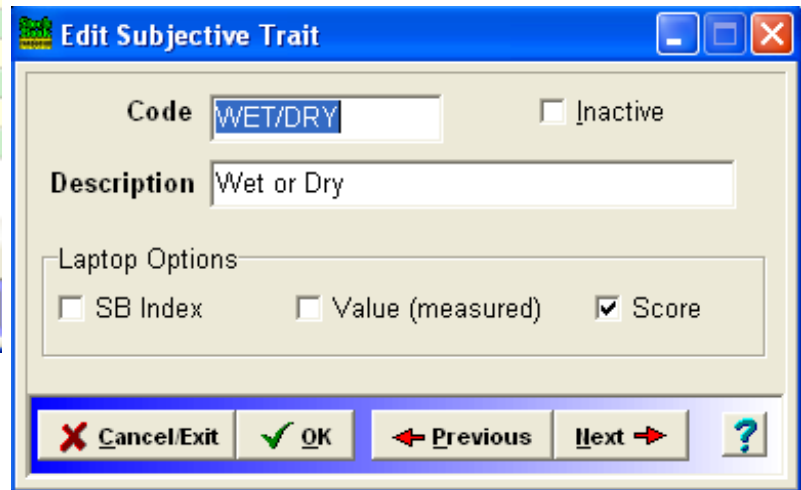
Paddocks and Product lists in the setup screens in Stockbook illustrating the Number and Code columns. These numbers can be used in the MyScale software to setup trait sessions so that long paddock or product names that would use up the number of allowed characters (19) can be replaced by 1 or 2 digit numbers.

Setting up Traits in Stockbook

If you are going to use Stockbook Traits in the RW700/800 template, you must set up the required trait in Stockbook first. This is a simple process. Go to the setup screen via the **Setup/Performance/Traits** menu item. The following screen is displayed



Click on the Add button and enter the details of the trait you require and select whether it is a measurement (eg.cm, kgs etc) or whether it is a score (observation) requiring letters (eg. B+ for muscling, W for wet, etc.)

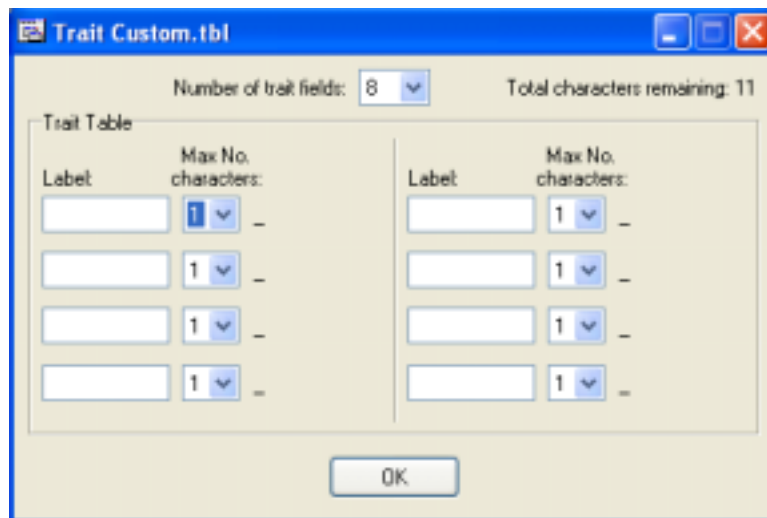


Setting up MyScale Pro for Trait Recording

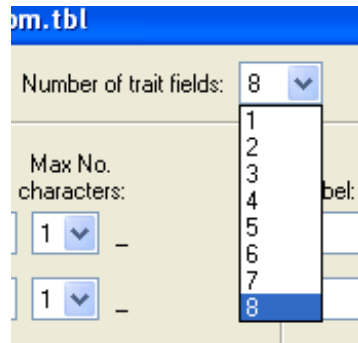
The Trait Tables feature of MyScale Pro when used with the Ruddweigh 700 Scale gives you the option to record details of individual animals by entering values against various characteristics. You can customise your own traits to be recorded. The trait table allows you to customise the traits you want to record. The trait table is then copied to the Scale. The table becomes the basis for the traits you can record when a new trait session is started on the scale.

To configure your own Trait Table, from the MyScale Pro main menu use the radio button to select and then click on the button. The following screen appears in the MyScale Pro Editor:

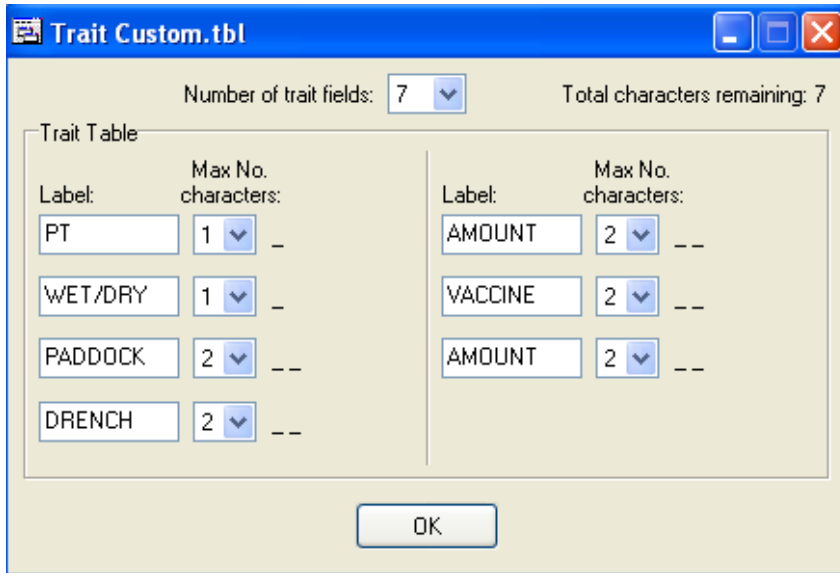
Configure Trait Custom table



You can create a maximum of eight trait fields. Select the number required from the drop-down list:



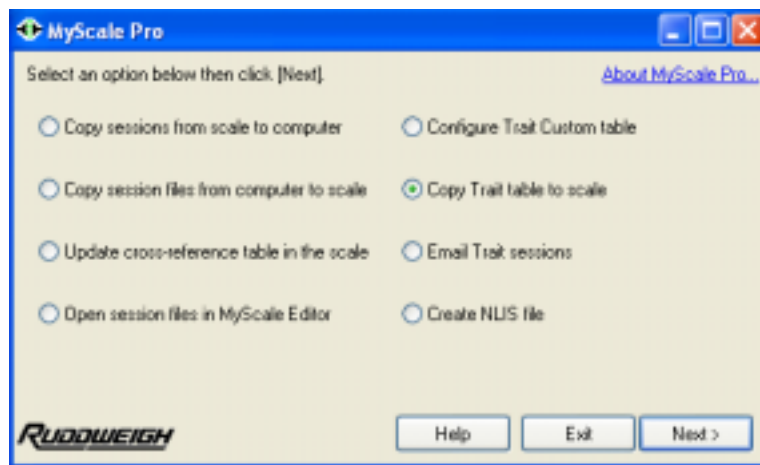
In each text box below the "Label" heading, type the name you want to use for each trait field. These labels will display on the Scale during a weighing session. After entering the label, use the drop-down list to choose the maximum number of characters that need to be recorded for this trait label during a session. The minimum is one and the maximum is eight.



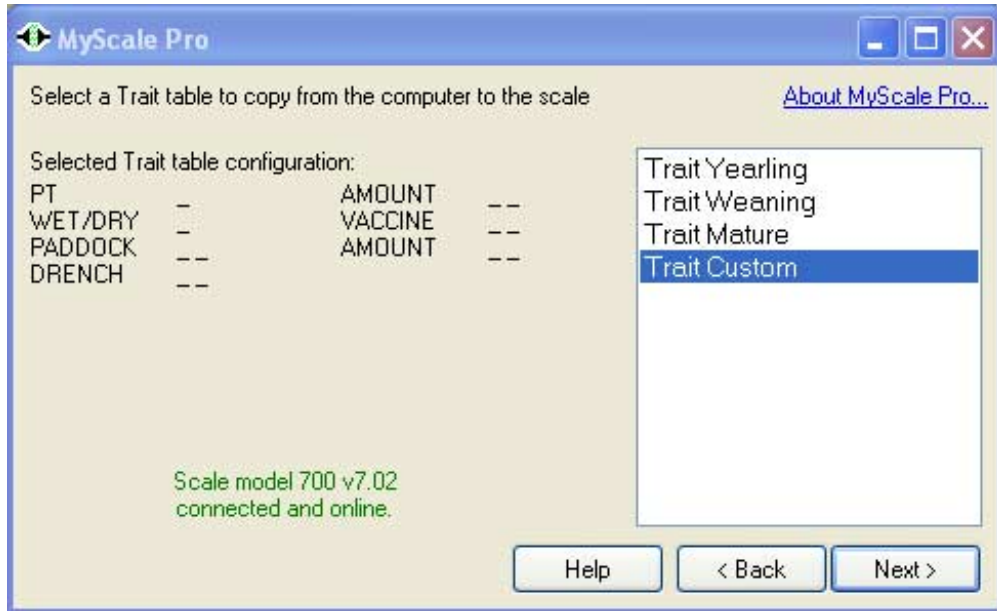
You can only choose a maximum of 19 characters to record for all traits. At the top right of the screen the total number of characters remaining (for the rest of the fields) displays as you progress.

When the Trait Table is complete to your requirements, click on the OK button. You will then be given the option to copy the table just created to the Scale. Click YES to copy the trait table to the scale or click NO to decline.

To send the template to the RW700/800 later, select the "Copy Trait table to scale" option on MyScale Pro.



The following screen appears. Select the "Trait Custom" from the list of tables available and Click Next. You may have to wait a few seconds for communications with the scales to be established. Click Next and the upload takes just a second or two.



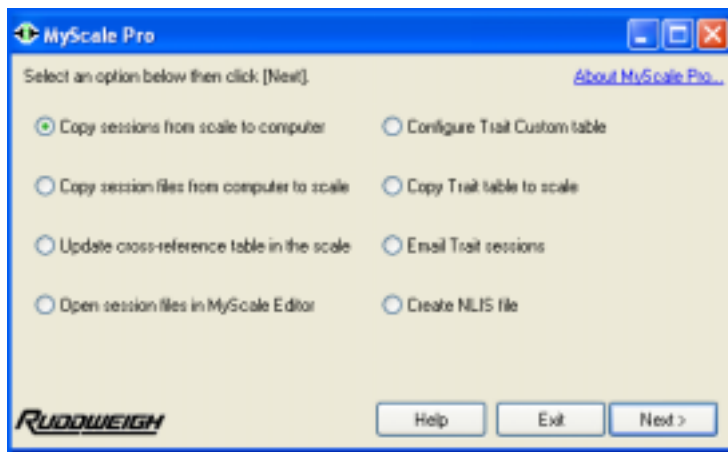
Importing the Trait session into Stockbook

Following the recording of the animals, the RW700/800 trait sessions need to be downloaded into the computer using MyScale Pro first, before being imported into Stockbook.

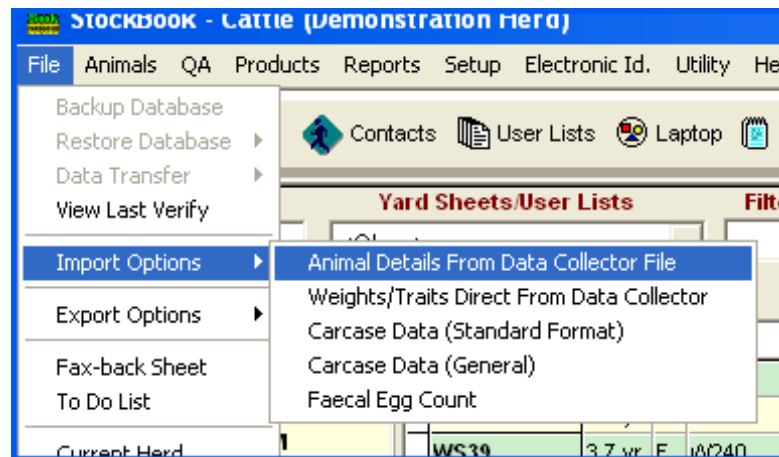
Note: These sessions are different to weight sessions which can be imported straight into Stockbook.

Connect the scales to the computer via a 9 pin serial cable. Select the communications position on the rotary switch on the 700/800 and select Port 1 to "Computer", then select the rotary switch back to "Auto".

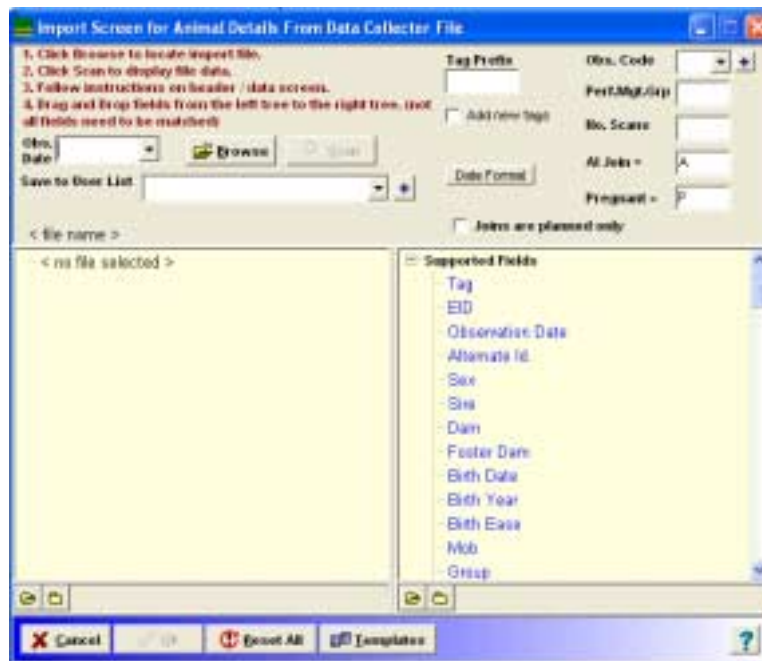
Start MyScale Pro and select the "Copy sessions from scale to computer" option from the displayed radio buttons.



In Stockbook select the **File/Import Options/Animal Details from Data Collector File** menu option.



The following import screen will display.



Instructions on using the General Import feature of Stockbook are displayed on the top left of the screen in maroon colours.

Click the **Browse** button to locate the file. This will be in the MyScale folder, probably on your desktop.

Click on the file name then click Open to select the file.

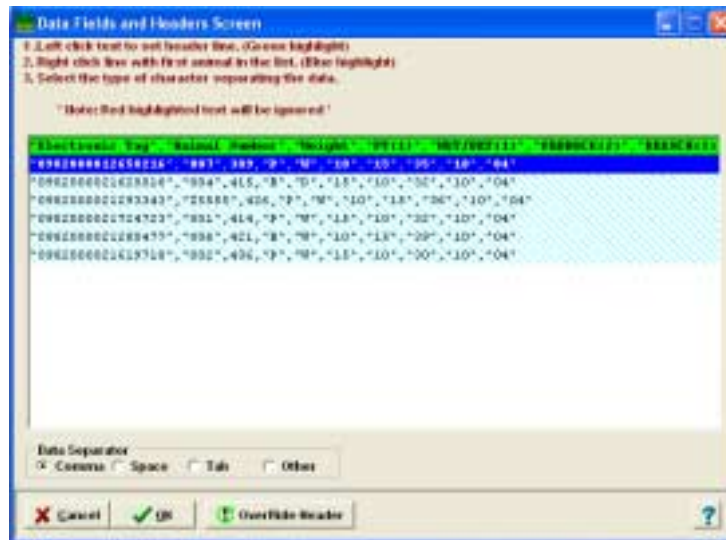
Now click the **scan** button to view the file.



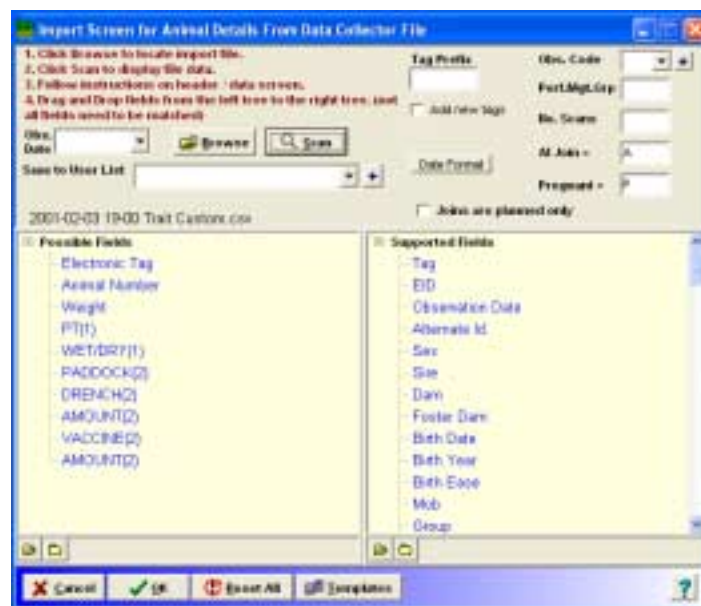
Left click on the top line where the **heading** is to tell Stockbook what the headings are

Right click on the **first record** in the list (there could be other extraneous data between the heading and the first record which we do not want to import)

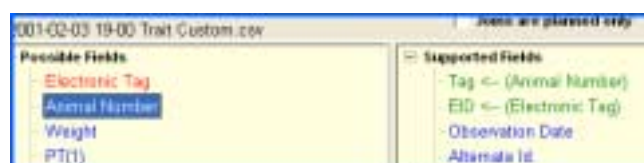
Click the correct **data separator** field (normally there should be commas between the bits of information). This will be pre-set to 'comma'.



Click on **OK** and the screen will return to the import view



Now, using the mouse, drag and drop the fields displayed in the left box (**Possible fields**) to the **matching** field in the right box (**Supported fields**) one at a time. This tells Stockbook where to store the incoming data.



Other fields you can fill in:

- You can enter a common **tag prefix** to all the management tags being imported. This means that you could leave off the entering of long tag numbers when you are entering each animal into the collector in the yards (not applicable to RFID)
- Click the **date format** button to match the format of any incoming dates.
- Click the **Add new tags** box if you will be loading in new animals from the file. You can then supply other details about these animals (that will not be available in the file itself) by clicking on the **Details** button.
- Save the format you have just setup to a **template** for future use if the data is always coming from the same source. (optional)
 - Click the Templates button
 - Select save
 - Choose an existing template if you wish to overwrite it, or click the new button and type in a name. Click save to save the new name and the format
- Click **OK** to start the import process. You will be alerted to any errors detected in the incoming data. All records without errors will be processed before this report is produced

You may get an error report if the information coming in from the file is not validated by Stockbook (paddock number that doesn't exist, etc.). If this is the case you may need to open the file in Excel or in the special file editor we have built into Stockbook. Go to the **Utility/View Edit CSV Files** menu option.

This utility will allow you to fix errors and save the file again for another import try.

Warning: Excel may change the format of the RFID number on saving and will render the file useless for importing.

Importing When You Have Two Product Events in the RW700/800 Trait File

If you have setup more than one product event (treatment) in the custom trait template for the RW700/800, you can still get those extra product uses into Stockbook. Leave out the second and subsequent products in the first import, then on a second (or third or more imports) import the same file but in each case just match the product event you missed out on the previous import. You must match the animal number each time otherwise Stockbook will not know who to record the event against.