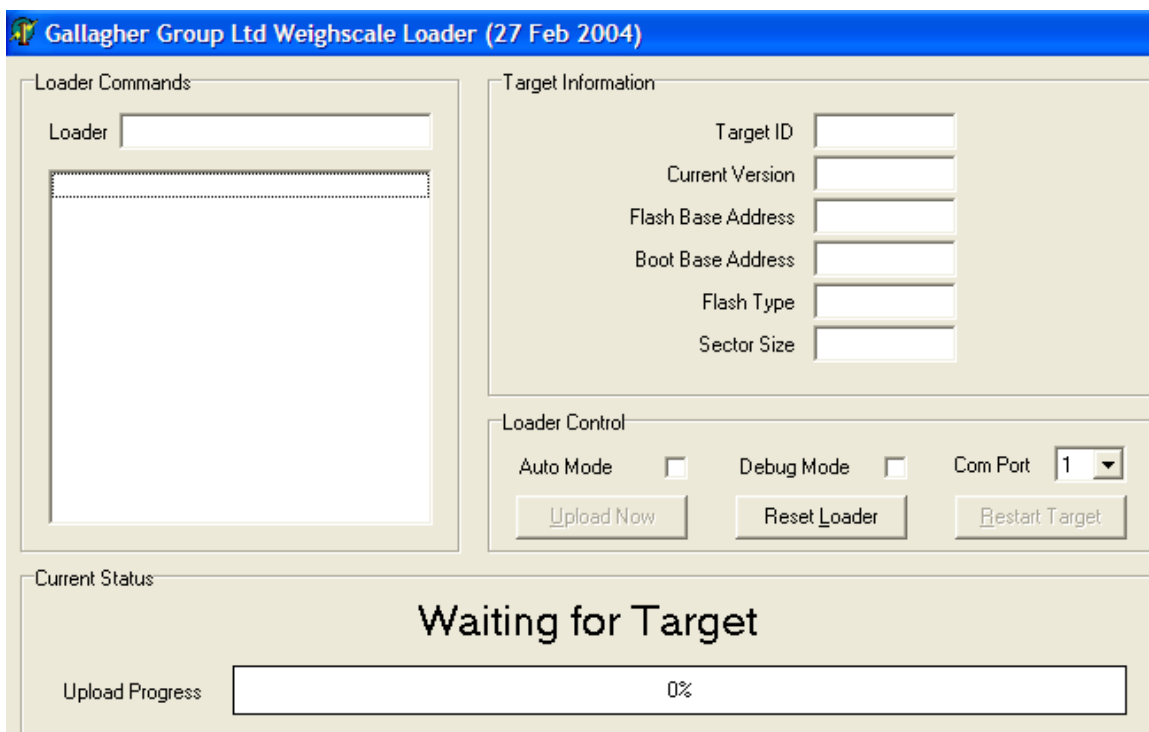


Instructions for upgrading an 700 scale.

Note: after upgrading, session data is retained on the scale. However it is strongly advised to firstly connect your scale to MyScale Pro and transfer your sessions to your PC as a backup.

1. Download the zip file containing the upgrade files from the Gallagher website and save to your desktop.
2. Double-click on the zip file and extract the files. (In Windows XP this is done by clicking on “extract all files” under “folder tasks” in the left hand pane.
3. Once extracted, double click on **flashload.exe**. The program will display:



4. Plug your scale into your computer using the standard serial cable provided for uploads, connecting the top port of the scale to whichever Com Port you are using on your PC. Set the Com Port value in the program to the correct number - in this case Com 1.
5. Uncheck “Auto Mode” if checked.

6. Turn on your scale. The fields will be populated with information similar to the illustration below and the bottom screen of the scale will darken waiting for the new program. If this does not happen, check connections, turn off the scale, click the reset loader button and turn the scale back on.

Gallagher Group Ltd Weighscale Loader (27 Feb 2004)

Loader Commands

Loader WEIGH SCALES LOADER V6.05

Bin File = WS 700.bin
New Version = 7.02.18
Old Version = Any
Protect1 =
Protect2 =
Protect3 =
Protect4 =
Protect5 =
Move Flash =
Erase Flash =
Clear Ram =
Fill Ram =
Program Boot = Yes
Restart Target = Yes

Target Information

Target ID WS 700
Current Version 7.2
Flash Base Address C0000
Boot Base Address FF900
Flash Type W28C020
Sector Size 128

Loader Control

Auto Mode Debug Mode Com Port 1

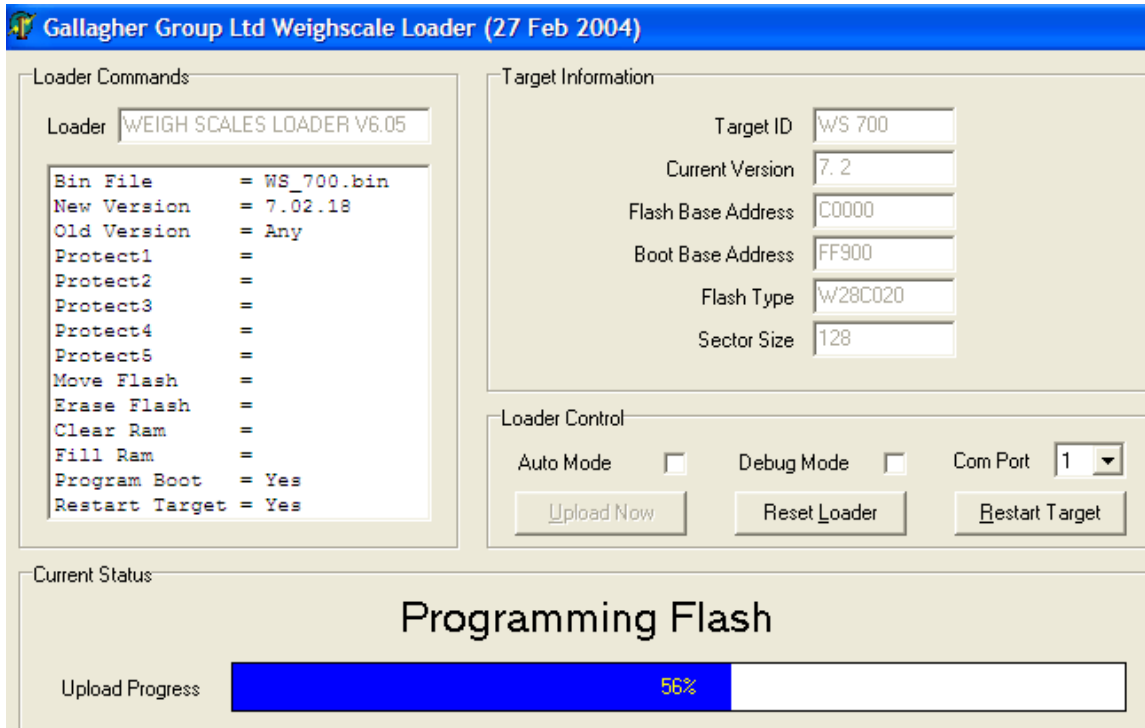
Upload Now Reset Loader Restart Target

Current Status

Press Upload Now to Start

Upload Progress 0%

7. Press the “Upload Now” Button. The program will now be sent to the scale. Programming progress is measured by the blue bar on screen as illustrated below. **Do not switch off the scale whilst it is programming.**



8. When programming is complete, the blue bar will reach 100% and the scale will beep. The scale will prompt you to press the Weigh (green) key to load factory defaults followed by the Zero (blue) key. Follow these prompts to complete flashloading.
9. Exit the flashload program and remove the cable.
10. Any communications setup in the scale will have to be re-entered by moving the rotary knob to Setup and selecting **5. COMMUNICATIONS**. Date and Time will also have to be re-entered by selecting **3. SET TIME AND DATE**.

