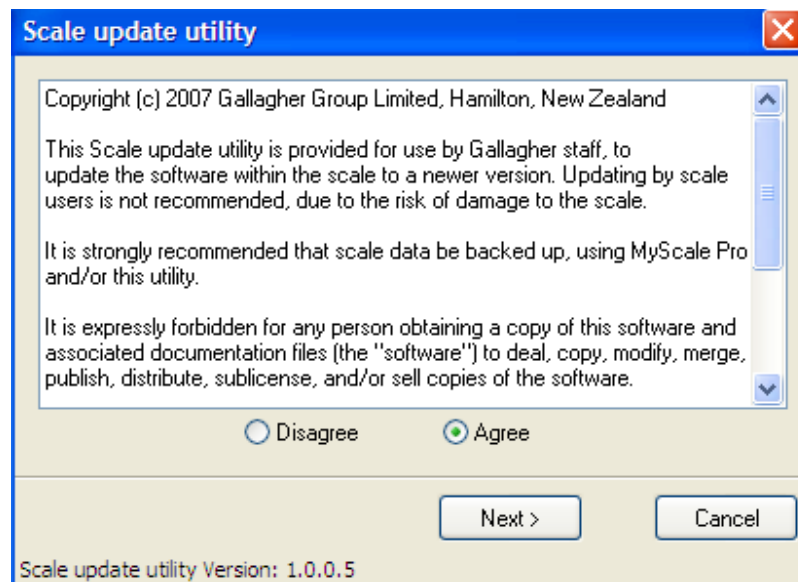
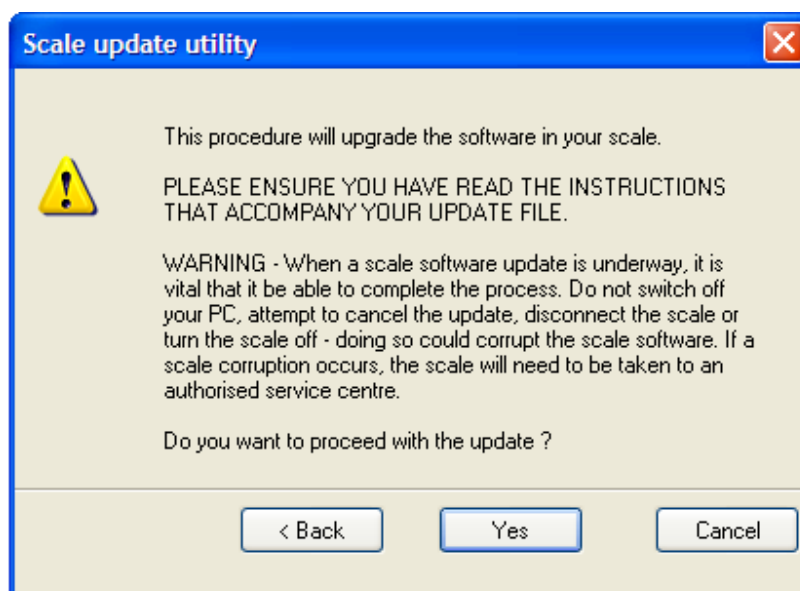


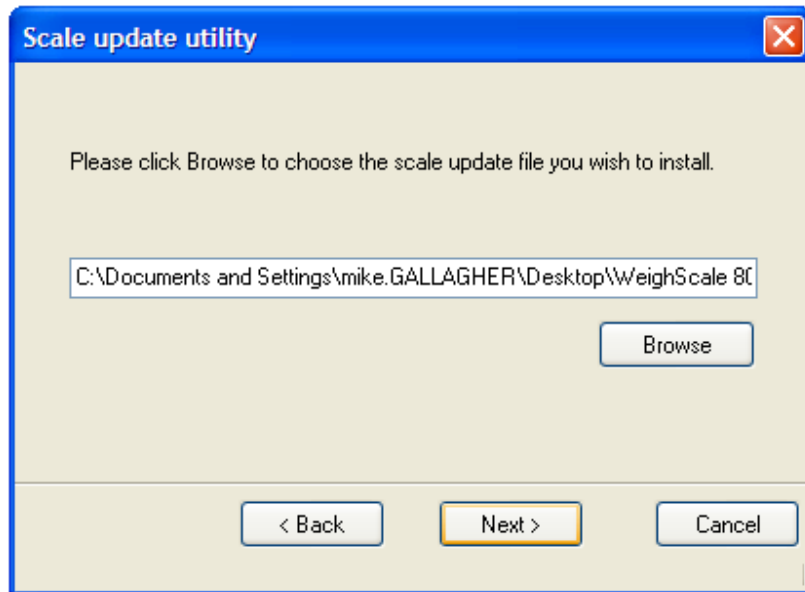
After downloading the GGLWSUpdateUtil.EXE self-extracting zip file, double click on it and it will automatically extract and run the program.

You will be presented with a number of screens which will guide you through the process of upgrading your scale.

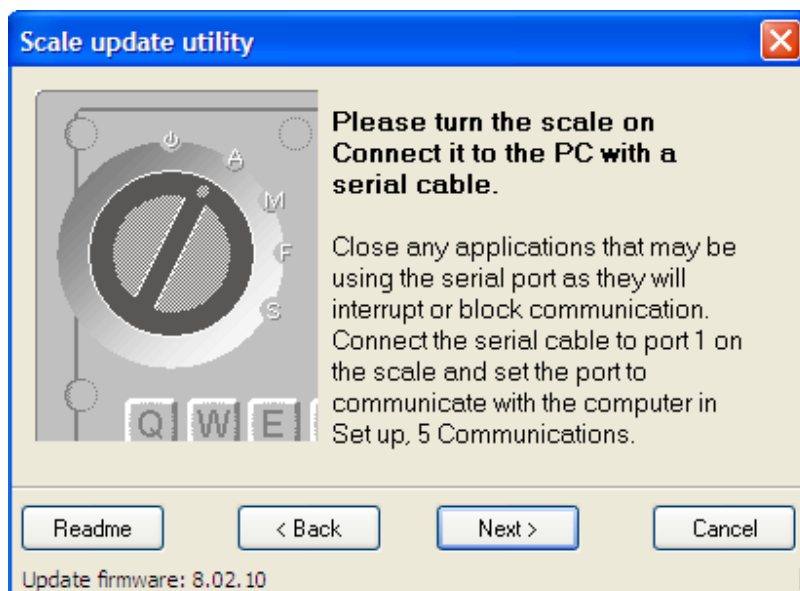


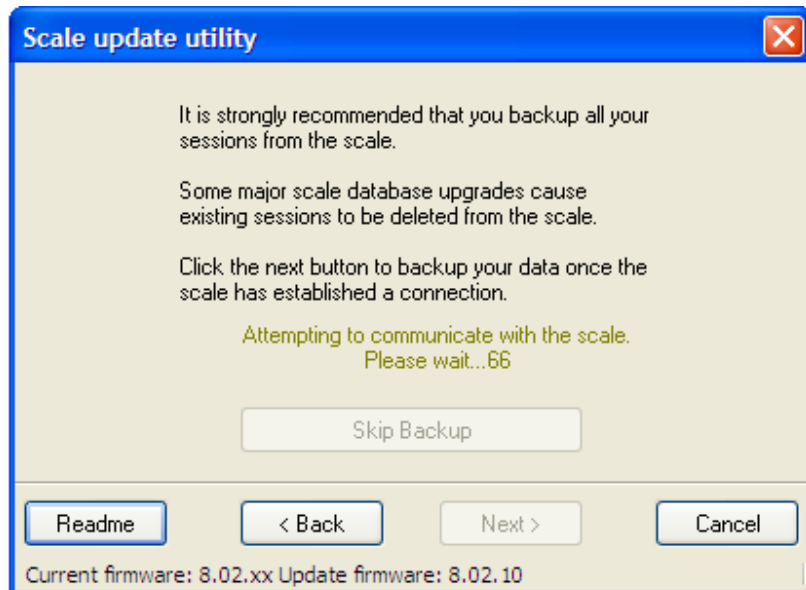
Follow the instructions on screen for each part of the uploading procedure.



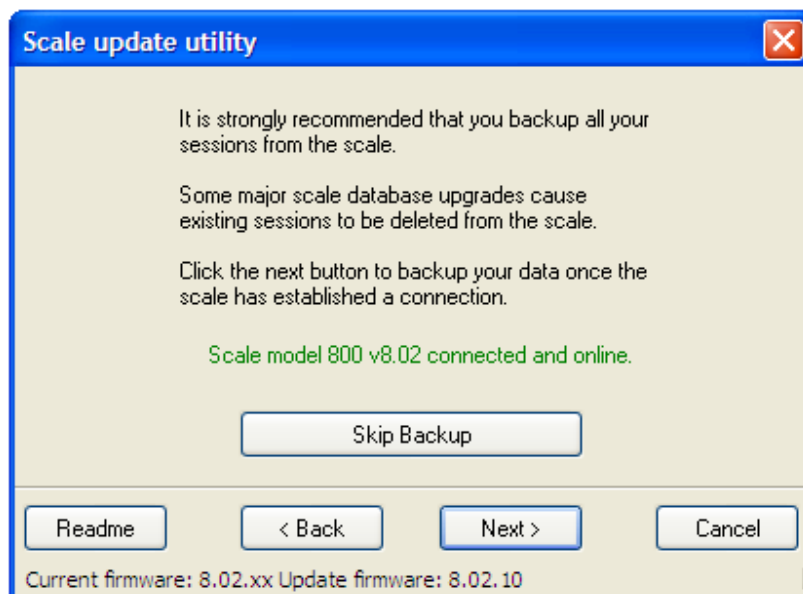


The correct update file will automatically be chosen.

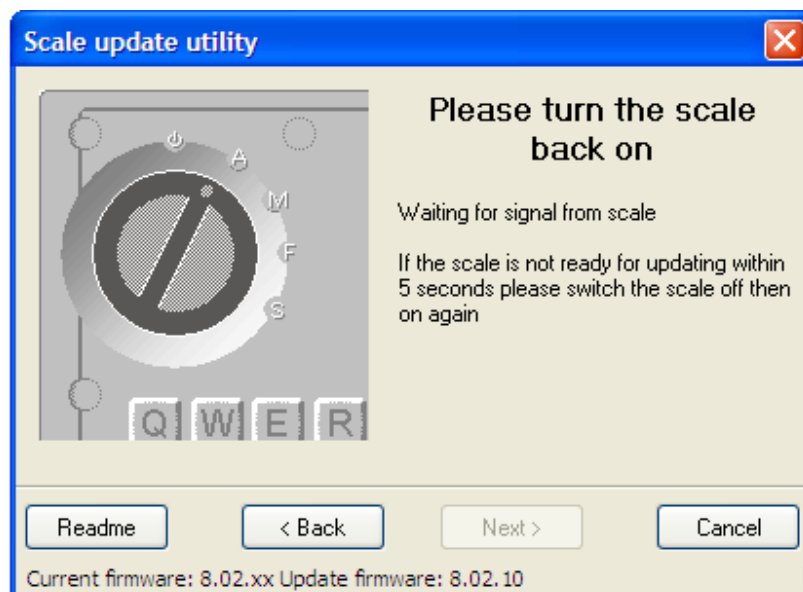
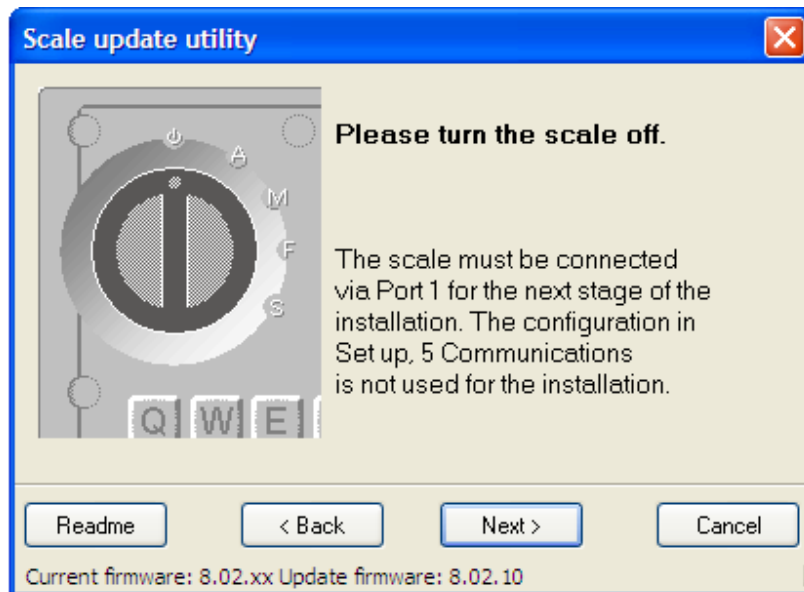


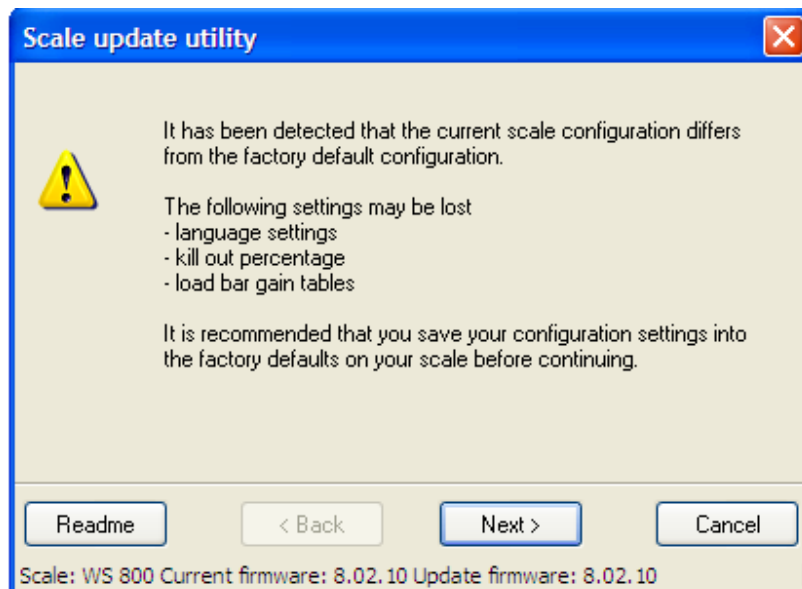
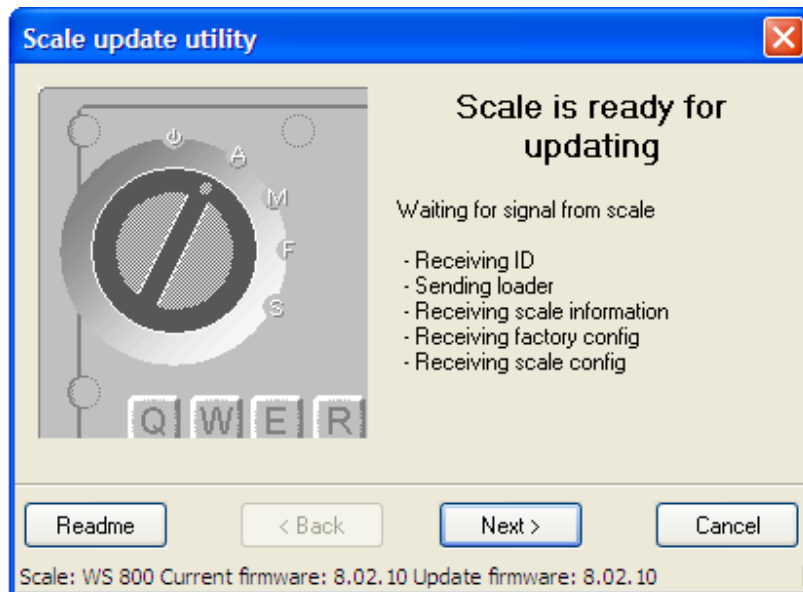


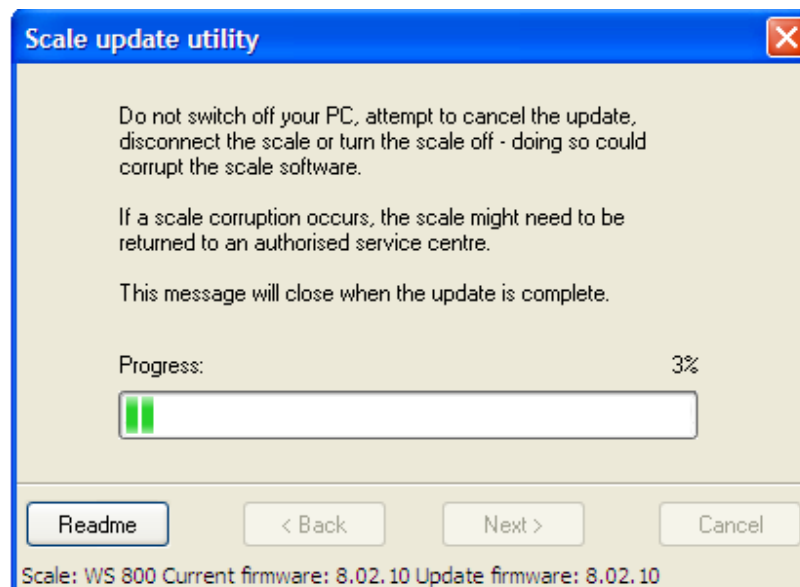
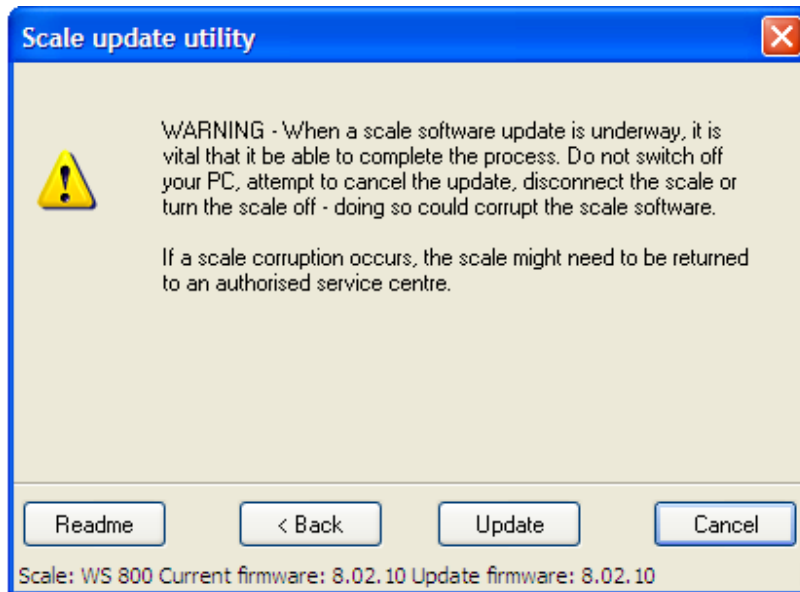
The program will search your Computer to find the COM port your scale is attached to. This can take a little while.

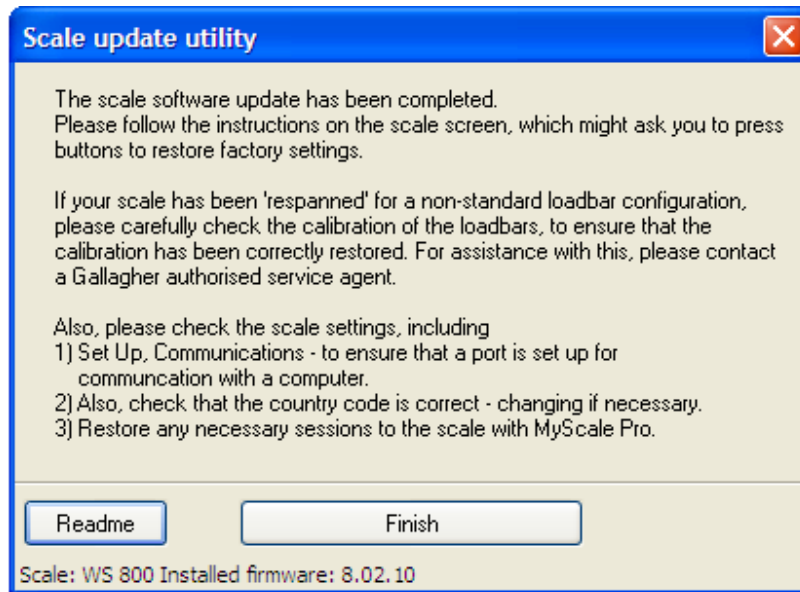


You can skip the backup here if you have already backed up your files.









You will be asked by the scale to press the WEIGH key and then the ZERO key after the upgrade has finished.

