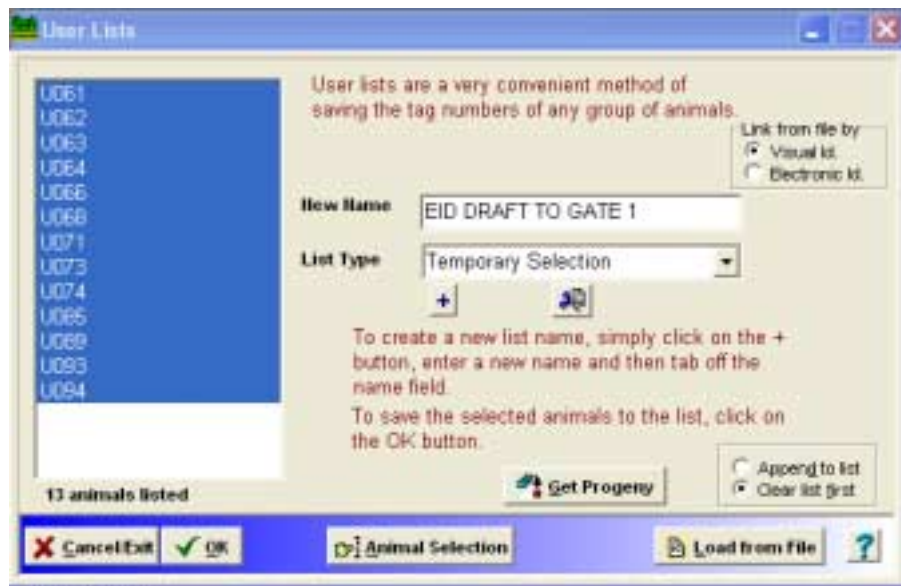


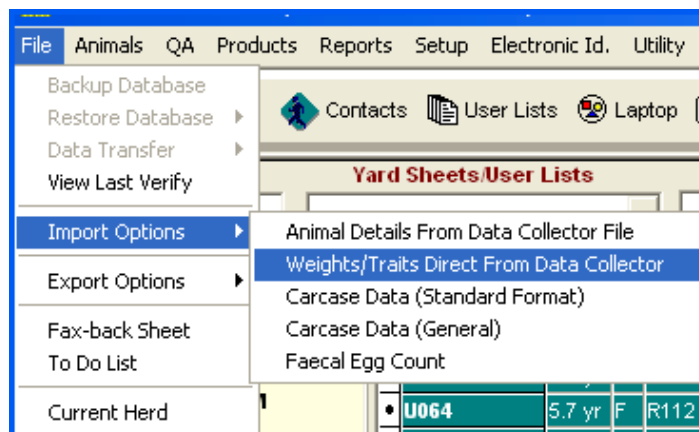
EXPORT A DRAFT LIST TO A RUDDWEIGH 600/700/800 FROM STOCKBOOK

To send a list of animals to the Ruddweigh 600/700/800:

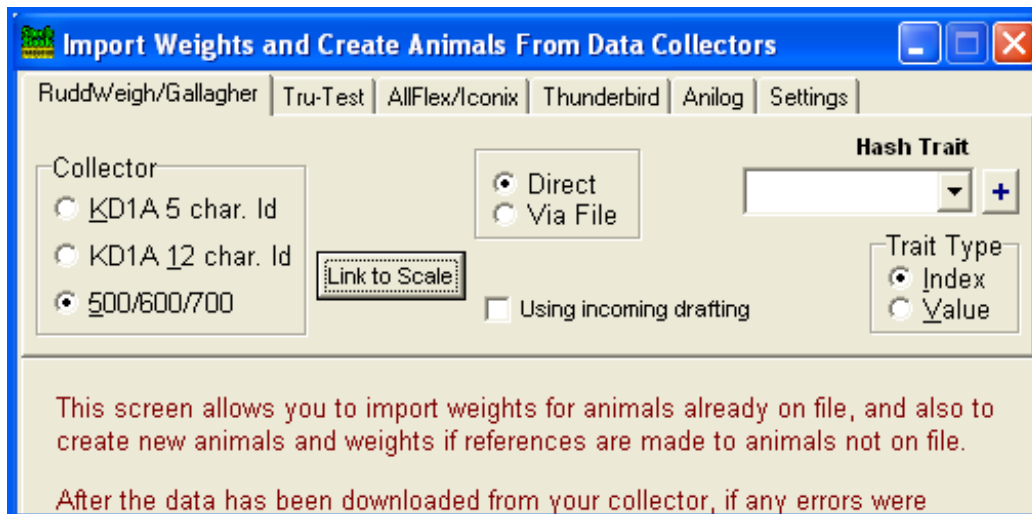
- In Stockbook, create a new **User List** by selecting 'User List' button at top of screen
- In the User Lists window, click the + button, add a new name **EID DRAFT TO GATE 1**, tab off the name to lock it in (this name must be used)



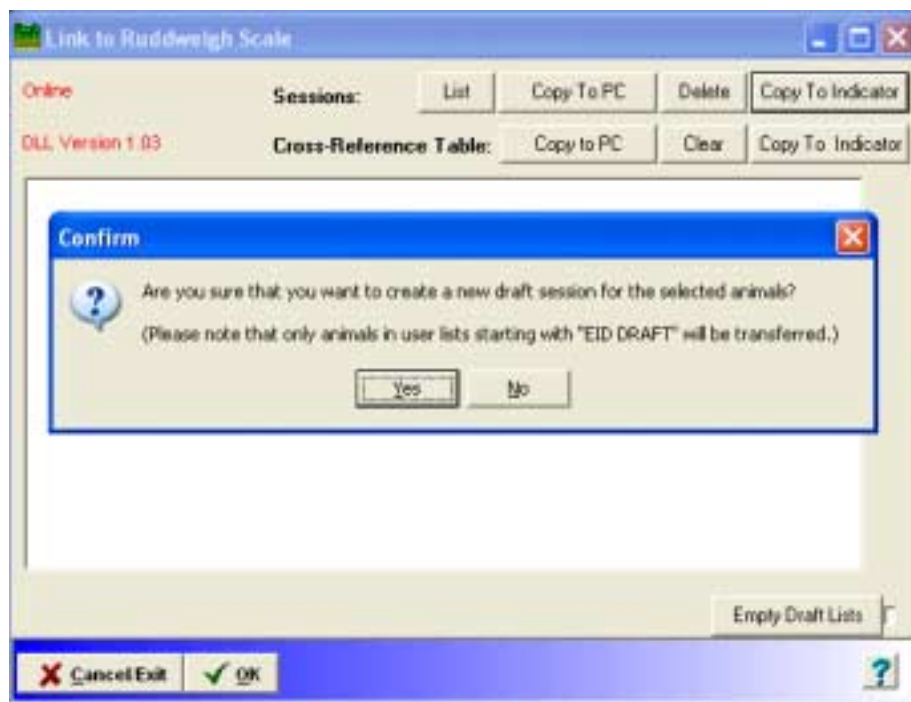
- Add the required animals. (Alternatively, you can select the required animals in the main animal list, then create the new User List)
- Select the communications position on the rotary switch on the 600/700/800 and select Port 1 to "Computer"
- Connect the scales to the computer via a 9 pin serial cable
- Once the user list is saved, go to **File/Import Options/Weights, traits direct from data collector** menu item (Note – this activity is under Import Options, even though this operation is exporting from the computer)



- Select Ruddweigh 300....800
- Click on **Link to Scale**



- Select **Copy To Indicator** from the session line of buttons (far right button), select 'Yes' then OK.



- Exit back to the main Stockbook screen
- The session should now be on the 600/700/800 under session name 'Draft List'. If desired, you can rename it on the 600/700/800 in session menu/name
- Select the session to commence work. You can record/handle the animal weights via EID if you have assigned an EID to the animal in Stockbook, if not, type in the visual ID to record weight details
- When the session is completed, transfer to Stockbook as per separate instructions